

# KEYLESS ENTRY

— BALDWIN QUALITY —



## Security & Convenience

- **One-touch locking with a motorized deadbolt**
- **Two customizable access codes**
- **Easy to install in a standard door prep**

**BALDWIN®**



8285.xxx.AC1  
Soho Deadbolt



8252.xxx.AC1  
Boulder Deadbolt



85386.xxx.ACRH (.ACLH)  
Soho Sectional Trim  
w/ 5485 Lever

Finishes



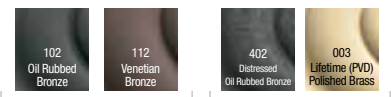
TIER 1

TIER 2



85353.xxx.ACRH (.ACLH)  
Boulder Sectional Trim  
w/ 5452 Beavertail Lever

Finishes



TIER 1

TIER 2

## Keyless Entry Deadbolt Features

- Easy Install in Minutes w/ Screwdriver
- Fits Standard Door Prep
- No Hard Wiring Required
- 2 Customizable User Codes with Easy Add & Delete
- 4 to 8 Digit Codes
- One Touch Locking
- Back-Lit Keypad for Increased Visibility
- Incorrect Code Lockout Feature
- Customizable Features
  - Automatic Door Locking after 30 Seconds
  - Door Locked / Unlocked led indicator
  - Audible beep for activation
- 4 AA Batteries
- Low Battery LED Indicator
- Tapered Deadbolt Design
- Protective Coated Keypad Preventing Wear & Discoloration
- Automatic Handing Feature
- Solid Forged Brass Trim

## Keyless Entry Deadbolt Specifications

|                       |                                      |
|-----------------------|--------------------------------------|
| <b>Function</b>       | Single Cylinder Deadbolt             |
| <b>Door Prep</b>      | 2 1/8" Bore, 1" Edge Bore            |
| <b>Backset</b>        | Adjustable 2 3/8" or 2 3/4"          |
| <b>Door Thickness</b> | 1.75" to 2.00"                       |
| <b>Cylinder</b>       | 5-Pin C-Keyway                       |
| <b>Faceplate</b>      | 1" Square Corner                     |
| <b>Strike</b>         | Square Corner with reinforcing plate |
| <b>Latch</b>          | 1" Throw                             |
| <b>Bolt</b>           | Brass, tapered w/ security pin       |
| <b>Door Handing</b>   | Automatic Handing                    |

# BALDWIN®

# FAQ LIST

## KEYLESS ENTRY

---

### **Does this product require a different installation?**

No, fits a standard tubular deadbolt prep.

### **What is the estimated life of the batteries?**

Approximately 1 year of standard use.

### **Is this product offered in an emergency egress function?**

No, this product is not offered in an Emergency Egress function.

### **What cylinders are provided?**

Uses a standard Images cylinder with an extended tail piece.

### **What latches are provided with this product?**

The Keyless Entry Deadbolt products use a modified standard Images Deadbolt Latch that includes a tapered bolt & a modified latch cam.

### **Are there issues with the motorized bolt in regards to weatherstripping expansion?**

The tapered bolt design was implemented in order to address these conditions.

### **Can I get additional finishes or split finishes?**

No, these products cannot be extended into additional finishes or split finishes at this time.

### **What is the standard lead time for these products?**

There will be an extended lead time period for the product launch, but after that the Keyless Entry products will maintain a standard Images product lead time of 3 weeks.

### **Are Keyed Alike sets offered?**

No, not at this time. Product will need to be rekeyed in the field.

### **What is the Warranty?**

The Keyless Entry Deadbolts carry a Standard Images Mechanical & Finish Warranty & a 1 Year Electronic Warranty.

### **Are batteries included?**

No, AA batteries are not included & will need to be purchased separately.

## HOW TO ORDER

---

**To Order Only a Deadbolt, Simply Order  
& Specify the Finish:**



Example: 8285.150.AC1

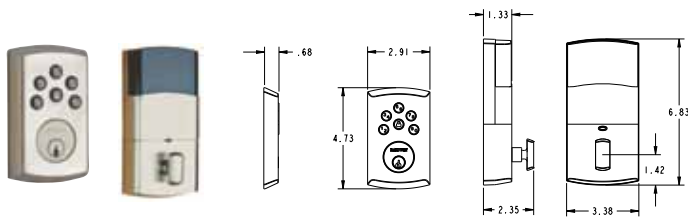
**To Order Sectional Handleset, Order Both Deadbolt &  
Sectional Handleset Kit (with Handing) & Specify the Finish:**



Example: 8285.150.AC1 + 85386.150.ACRH

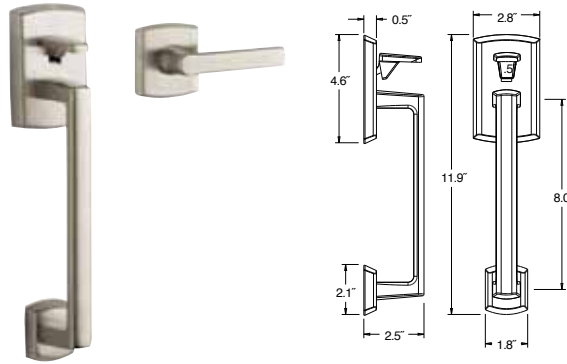
# BALDWIN

**SOHO  
DEADBOLT**

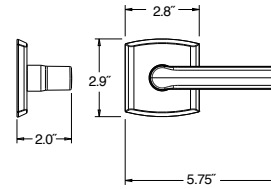


| Item #       | Description | Tier 1<br>150, 260, 264 | Tier 2<br>056 |
|--------------|-------------|-------------------------|---------------|
| 8285.xxx.AC1 | Deadbolt    | \$465                   | \$495         |

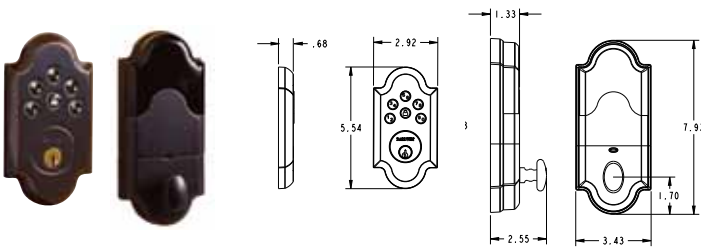
**SOHO  
SECTIONAL  
HANDLESET KIT**



| Item #                | Description                   | Tier 1<br>150, 260, 264 | Tier 2<br>056 |
|-----------------------|-------------------------------|-------------------------|---------------|
| 85386.xxx.ACRH (ACLH) | Sectional Entry Handleset Kit | \$335                   | \$350         |

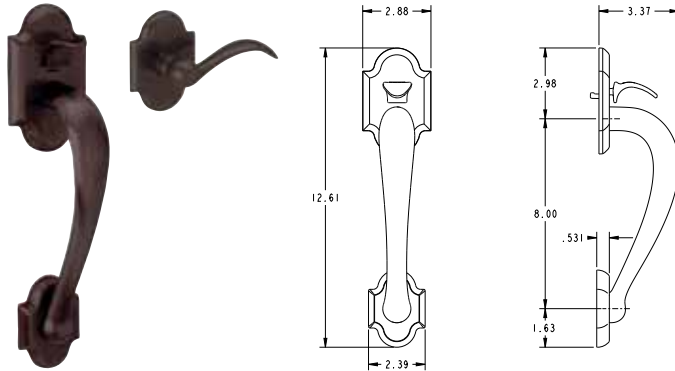


**BOULDER  
DEADBOLT**

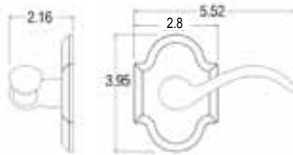


| Item #       | Description | Tier 1<br>102, 112 | Tier 2<br>003, 402 |
|--------------|-------------|--------------------|--------------------|
| 8252.xxx.AC1 | Deadbolt    | \$465              | \$495              |

**BOULDER  
SECTIONAL  
HANDLESET KIT**



| Item #                | Description                   | Tier 1<br>102, 112 | Tier 2<br>003, 402 |
|-----------------------|-------------------------------|--------------------|--------------------|
| 85353.xxx.ACRH (ACLH) | Sectional Entry Handleset Kit | \$335              | \$350              |



DISPLAY OPTIONS

**Keyless Entry Active Mounts  
\$310 Each**

**See Your Rep for Details**



9679.860.KE150  
Soho Sectional Mount

9851.860.KE112  
Boulder Sectional Mount

**BALDWIN®**